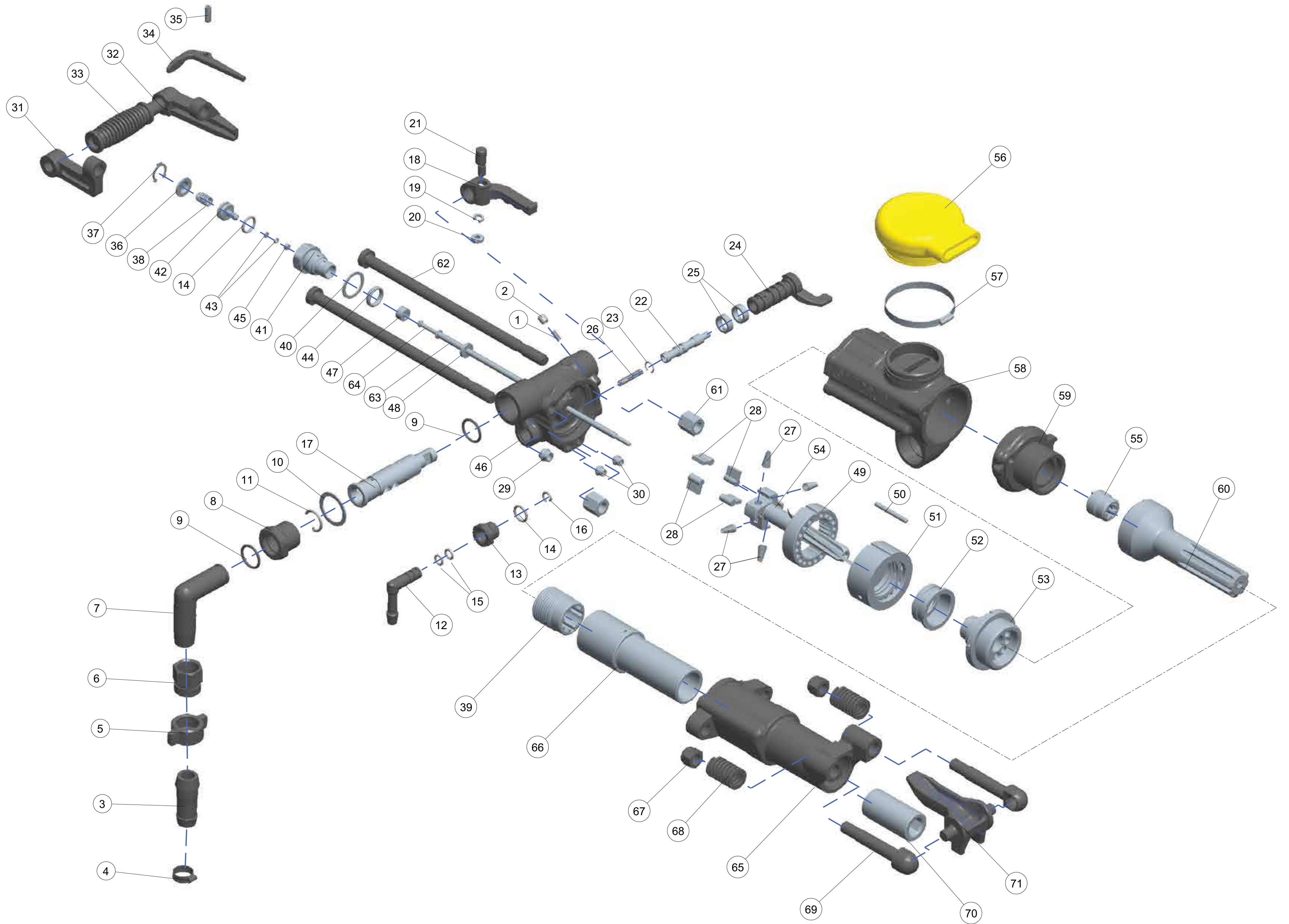


# Secoroc YT29A

## Pusher leg rock drill



Ref.	Description	Qty	Prod. No.	Product code
1	Spring	1	96000179	9605-1-3312310169
2	Pin	1	96000180	9605-1-3312310170
3	Conical pipe connector	1	96000186	9605-1-3312310176
4	Hoop	1	96000540	9605-1-3312310723
5	Wing nut	1	96000185	9605-1-3312310175
6	Pipe connector	1	96000187	9605-1-3312310177
7	Air pipe swivel	1	96000825	9600-1-3312310022
8	Air pipe nut	1	96000823	9600-1-3312310020
9	O-ring	2	96000486	9605-1-3312310633
10	Pad	1	96000174	9605-1-3312310164
11	Retaining ring	1	96000182	9605-1-3312310172
12	Water pipe connector	1	96000154	9603-1-3312310143
13	Water pipe nut	1	96000155	9603-1-3312310144
14	O-ring	2	96000482	9605-1-3312310627
15	O-ring	2	96000499	9605-1-3312310667
16	Water pipe connector retaining ring	1	96000156	9603-1-3312310145
17	Control valve	1	96000646	9605-1-3312311868
18	Control handle	1	96000152	9603-1-3312310141
19	Standard spring pad	1	96000534	9605-1-3312310716
20	Hex. thin nut	1	96000524	9605-1-3312310704
21	Fixing pin	1	96000177	9605-1-3312310167
22	Change valve	1	96000161	9603-1-3312310150
23	Retaining ring	1	96000160	9603-1-3312310149
24	Pressure regulating valve	1	96000119	9602-1-3312310101

Ref.	Description	Qty	Prod. No.	Product code
25	Expansion	2	96000118	9602-1-3312310099
26	Spring	1	96000157	9603-1-3312310146
27	Conical spring	4	96000167	9605-1-3312310156
28	Ratchet pawl	4	96000166	9605-1-3312310155
29	Large seal sleeve	1	96000544	9605-1-3312310727
30	Seal sleeve	2	96000543	9605-1-3312310726
31	Right handle	1	96000163	9603-1-3312310152
32	Left handle	1	96000165	9603-1-3312310154
33	Shockproof handle	1	96000164	9603-1-3312310153
34	Trigger	1	96000162	9603-1-3312310151
35	Elastic pin	1	96000527	9605-1-3312310708
36	Spring cover	1	96000169	9605-1-3312310159
37	Steel retaining ring	1	96000183	9605-1-3312310173
38	Spring	1	96000170	9605-1-3312310160
39	Rotation nut	1	96000146	9603-1-3312310135
40	Pad	1	96000184	9605-1-3312310174
41	Water valve body	1	96000171	9605-1-3312310161
42	Water valve	1	96000173	9605-1-3312310163
43	O-ring	2	96000489	9605-1-3312310642
44	Seal	1	96000181	9605-1-3312310171
45	Rubber pad	1	96000175	9605-1-3312310165
46	Back head	1	96000091	9605-1-3312310050
47	Water tube bush	1	96000835	9601-1-3312310035
48	Air tube pad	1	96000176	9605-1-3312310166

Ref.	Description	Qty	Prod. No.	Product code
49	Ratchet	1	96000092	9605-1-3312310051
50	Dowel pin	1	96000839	9601-1-3312310039
51	Valve chest	1	96000093	9605-1-3312310052
52	Valve	1	96000094	9605-1-3312310053
53	Valve sleeve	1	96000639	9605-1-3312311860
54	Rifle bar	1	96000640	9605-1-3312311861
55	Rifle nut	1	96000095	9605-1-3312310056
56	Exhaust deflector	1	96000562	9605-1-3312311050
57	Hoop	1	96000542	9605-1-3312310725
58	Cylinder	1	96000641	9605-1-3312311862
59	Guide sleeve set	1	96000732	9605-1-3312312340
60	Piston	1	96000642	9605-1-3312311863
61	Hex. Thick nut	2	96000518	9605-1-3312310697
62	Side bolt	2	96000643	9605-1-3312311864
63	Air tube	1	96000644	9605-1-3312311865
64	Water tube	1	96000645	9605-1-3312311866
65	Front head	1	96000647	9605-1-3312311875
66	Rotation sleeve	1	96000648	9605-1-3312311876
67	Nonmetal hex. Locking nut	2	96000531	9605-1-3312310713
68	Steel retainer springs	2	96000818	9600-1-3312310013
69	Steel retainer bolt	2	96000634	9600-1-3312311820
70	Shank sleeve	1	96000168	9605-1-3312310157
71	Working tool retainer	1	96000635	9600-1-3312311821

NOTE! Tightening torque of side bolt nuts should be 80 Nm.