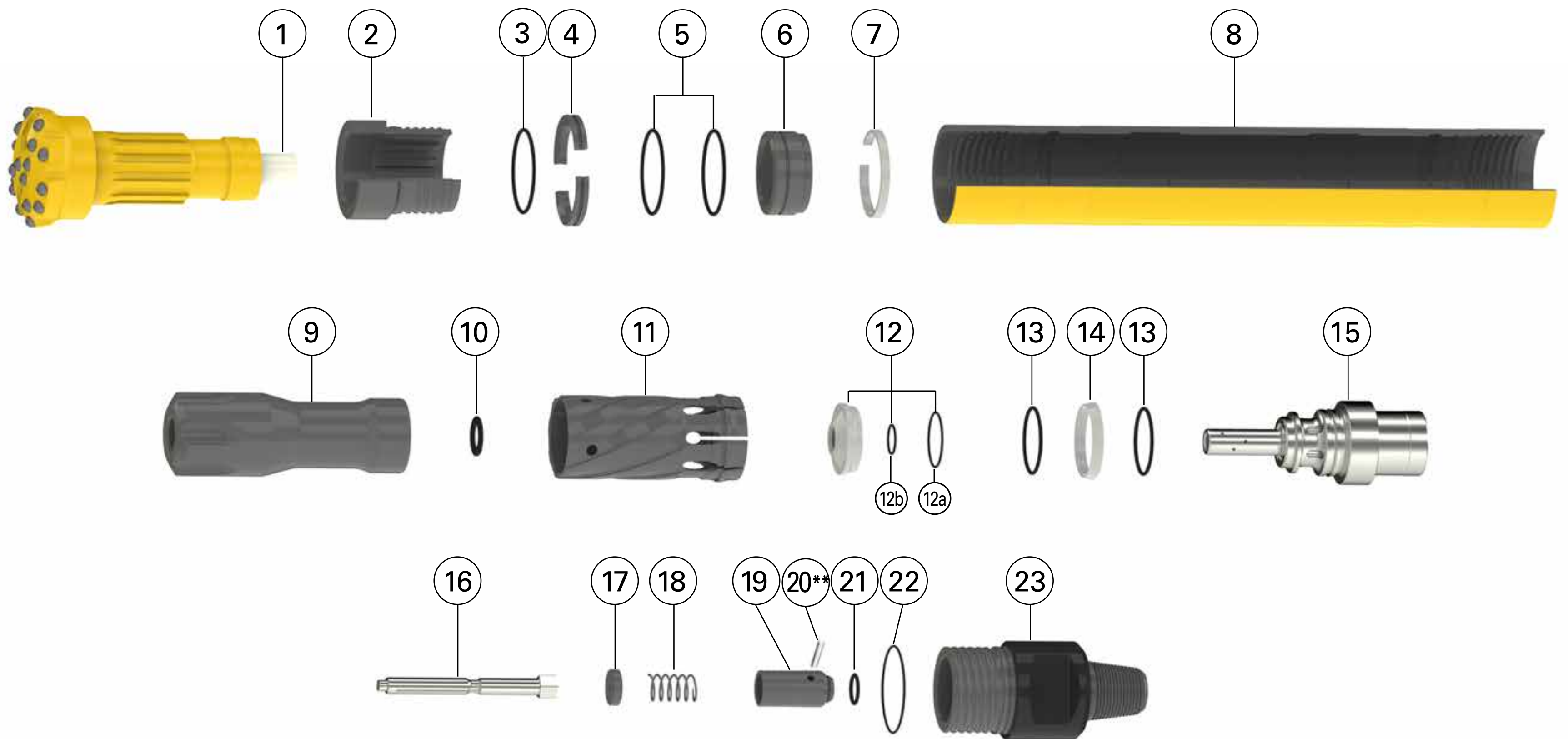


# Secoroc QLX 60/65

## Down-the-hole hammer



Ref.	Part	Prod. No.	Product code
1	Exhaust tube	90514253	9283
1	Exhaust tube, tapered	52340247	9283-52340247
2	Chuck for QLX 60	52340635	9706-QX-00-000-26-000-001
2	Chuck for QLX 65	52338498	9706-QX-00-000-26-H00-001
3	O-ring* (Chuck)	-	-
4	Bit retaining ring assembly	52327632	9706-QX-00-000-26-000-A02
5	O-ring* (Bit retainer)	-	-
6	Bit bearing	52324506	9706-QX-00-000-26-000-A22
7	Bearing retaining ring	52324514	9706-QX-00-000-00-000-058
8	Casing for QLX 60	52324415	9706-QX-00-000-00-000-004
8	Casing for QLX 65	52324555	9706-QX-00-000-00-H00-004
9	Piston	52324423	9706-QT-00-000-26-000-005
10	Tail seal	52333820	9706-QX-00-000-00-000-054
11	Cylinder	52324480	9706-QX-00-000-00-000-048
12	Valve assembly	52333895	9706-QX-00-000-00-000-K45
12a	Seal*	-	-
12b	O-ring*	-	-
13	O-ring*	-	-
14	Compression cone	52329034	9706-QX-00-000-00-000-014
15	Distributor assembly	89012288	9706-QX-00-000-00-000-042
16	Airselect guide plug	89012271	9706-QX-00-000-00-000-052
17	Seat, check valve spring	89012272	9706-QX-00-000-00-000-018
18	Check valve spring	52349172	9706-QX-00-000-00-000-016
19	Check valve (O-ring incl.)	89010129	9706-QX-00-000-00-000-A17
20	Choke plug Solid**	50899137	9706-QL-00-000-00-000-180
20	Choke plug 1/4" **	50899111	9706-QL-00-000-00-000-181
20	Choke plug 1/8" **	50899129	9706-QL-00-000-00-000-182
21	O-ring* (Check valve)	-	-

Ref.	Part	Prod. No.	Product code
22	O-ring* (Backhead)	-	-
23	Backhead for QLX 60	52351806	9706-QX-00-14P-00-000-020
23	Backhead for QLX 65	52349222	9706-QX-00-14P-00-HB0-020

\*O-rings not sold separately. Included in different kits, see table.

\*\*Item 20: Choke plug 1/4" and choke plug 1/8" may be used to bypass more air to reduce pressure and/or increase bailing velocity.

Hammers and kits	Prod. No.	Product code
QLX 60 complete, 3 1/2" API Reg Pin	52352465	9706-QX-00-14P-64-000
QLX 65 complete, 3 1/2" API Reg Pin	52352473	9706-QX-00-14P-64-HB0
E-kit, QLX 60 incl. item 2, 3, 2x5, 8, 10, 12, 2x13, 18, 21, 22, 23	89010007	9706-QX-00-14P-64-000-K40
E-kit, QLX 65 incl. item 2, 3, 2x5, 8, 10, 12, 2x13, 18, 21, 22, 23	89010009	9706-QX-00-14P-64-HB0-K40
O-ring kit incl. item 4x3, 4x5, 4x13, 21, 2x22	89010120	9706-QX-00-000-00-000-K47
Sustainability kit incl. item 3, 2x5, 10, 12, 2x13, 21, 22	52354646	9706-QX-00-000-00-000-070

Wear limits		
Chuck	Min. length	2.15 in / 54.6 mm
Casing reverse QLX 60	Min. OD	5.44 in / 138.2 mm
Casing reverse QLX 65	Min. OD	5.63 in / 142.9 mm
Casing discard	Min. OD	5.31 in / 134.9 mm
Bit bushing	Max. ID	3.623 in / 92.02 mm
Piston / Casing clearance	Max.	0.009 in / 0.23 mm
Piston / Cylinder	Max.	0.009 in / 0.23 mm
Exhaust tube protrusion		2.31 in / 58.67 mm