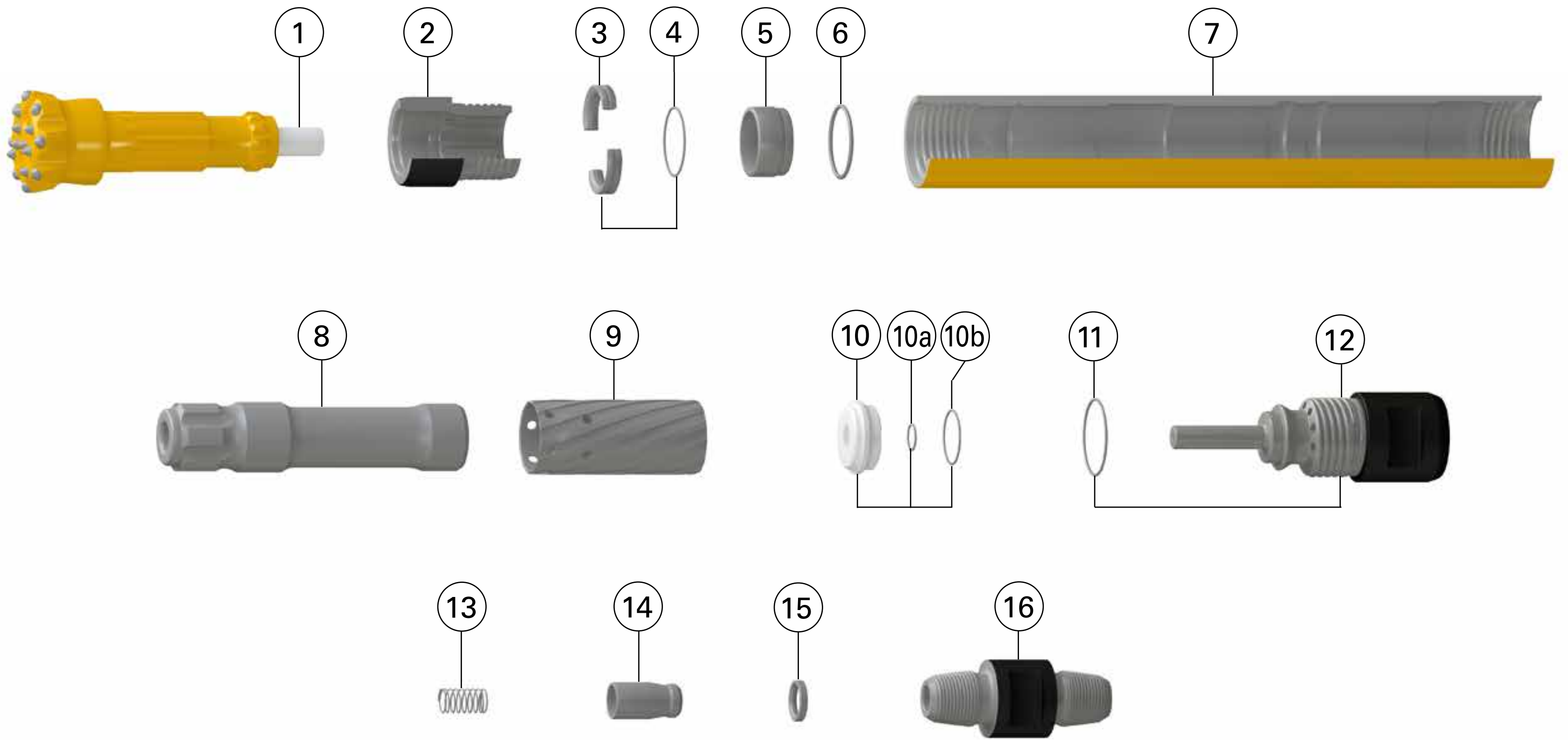


Secoroc QLX40

Down-the-hole hammer



| Ref. | Part | Prod. No. | Product code |
|------|--|-----------|---------------------------|
| 1 | Exhaust tube | 90516004 | 9115 |
| 2 | Chuck | 52339686 | 9704-QX-00-000-64-000-001 |
| 3 | Bit retaining ring assembly incl. O-ring | 52339694 | 9704-QX-00-000-64-000-A02 |
| 4 | O-ring* (bit retaining ring) | - | |
| 5 | Bit bearing | 52339702 | 9704-QX-00-000-64-000-A22 |
| 6 | O-ring* (bit bearing) | - | |
| 7 | Casing assembly incl. inner cylinder | 52341112 | 9704-QX-00-000-00-000-004 |
| 8 | Piston | 52341120 | 9704-QX-00-000-64-000-005 |
| 9 | Inner cylinder* | - | |
| 10 | Valve assembly incl. O-rings | 52345402 | 9704-QX-00-000-00-000-A45 |
| 10a | O-ring* (valve) | - | |
| 10b | O-ring* (valve) | - | |
| 11 | O-ring*(backhead) | - | |
| 12 | Backhead assembly incl. O-ring | 89010127 | 9704-QX-00-000-00-000-A20 |
| 13 | Check valve spring | 89010119 | 9704-QX-00-000-00-000-016 |
| 14 | Check valve | 89010118 | 9704-QX-00-000-00-000-017 |
| 15 | Check valve seal | 52344744 | 9704-QX-00-000-00-000-018 |
| 16 | Adapter 2 3/8" API Reg pin-pin | 89009498 | 310-3089-10-007-01-D00,41 |

*O-rings not sold separately. Included in different kits, see table.

| Hammers and kits | Prod. No. | Product code |
|--|-----------|---------------------------|
| QLX 40 complete, 2 3/8" API Reg. Box incl. pin-pin adapter | 89010117 | 9704-QX-00-10P-64-000 |
| Economy kit | N/A | N/A |
| O-ring kit incl. 3x4, 6, 10a, 10b, 11, 15 | 89010164 | 9704-QX-00-000-00-000-K47 |

| Accessories | Prod. No. | Product code |
|------------------|-----------|-------------------|
| Break out washer | 89010017 | 9704-00-60-00-053 |

| Wear limits | | |
|-----------------------------------|-------------|-------------------|
| Chuck | Min. length | 1.85" / 47 mm |
| Casing, backhead end | Min. OD | 3.66" / 93,0 mm |
| Casing, chuck end | Min. OD | 3.58" / 91,0 mm |
| Bit bearing | Max. ID | 2.068" / 52,53 mm |
| Piston / casing clearance | Max. | 0.011" / 0,27 mm |
| Piston / inner cylinder clearance | Max. | 0.011" / 0,27 mm |
| Exhaust tube protrusion | | 2.32" / 58,93 mm |

9866 0190 01 - 2018 04