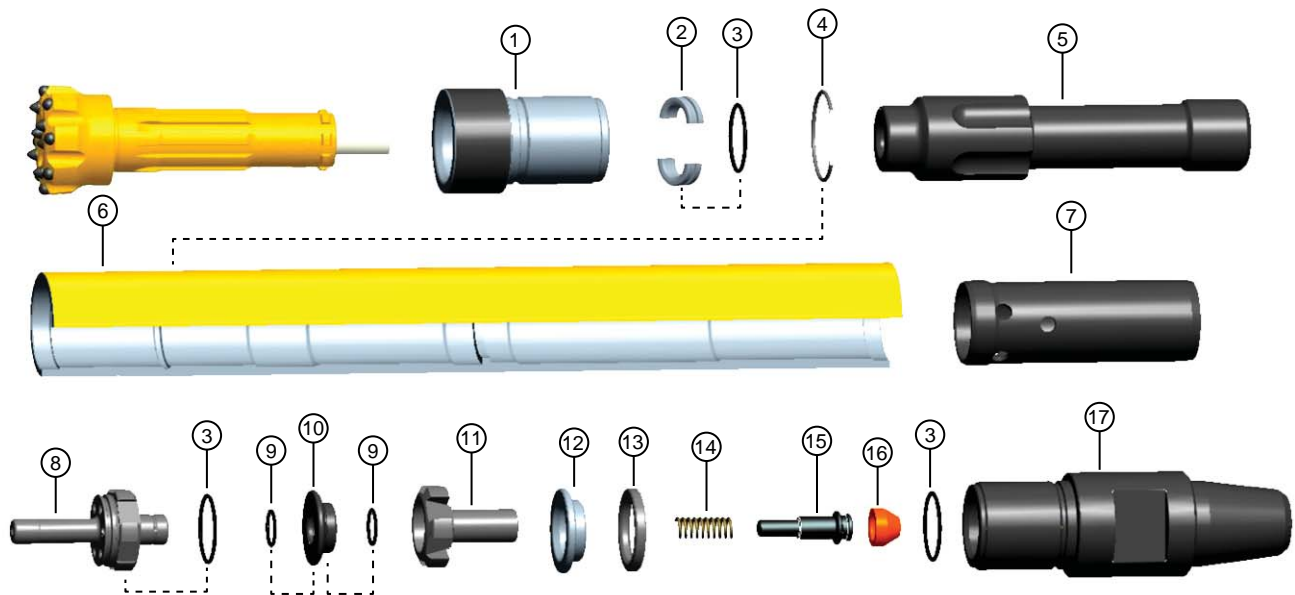


Secoroc Prisma 3

Down-the-Hole Hammer



Ref.	Part	Prod. No.	Product Code
1	Chuck (Drive sub)	93501501	9703-00-75-00-001
2	Bit Retainer Ring	93501500	9703-00-75-00-002
3	O-Ring (Top sub, Lower Valve and Bit Retainer Ring)	93501483	0663-H0900134
4	Piston Retainer Ring (Stop ring)	93501495	9703-00-77-00-064
5	Piston	93501499	9703-00-75-00-005
6	Wearsleeve (Hammer Case)	93501493	9703-00-77-00-004
7	Inner Cylinder (Liner)	93501492	9703-00-77-00-048
8	Bevelled Valve Housing (Bottom Valve)	93501491	9703-00-77-00-046
9	O-Ring (Top Valve and Flapper Valve)	93501489	0663-H0900136
10	Disc Valve (Flapper Valve)	93501490	9703-00-77-00-044
11	Valve Chest (Top Valve)	93501488	9703-00-77-00-042
12	Top sub Spacer	93501487	9703-00-77-00-072
13	Buffer Ring (Elastomer)	93501486	9703-00-77-00-009
14	Check Valve Spring	93501485	9703-00-77-00-016
15	Check Valve	93501508	9704-00-74-00-015
16	Check Valve Cap	93501484	9703-00-77-00-015
17	Backhead (Top sub) with Relief 2 3/8" API Thread	93501482	9703-03-77-00-020

Hammers and Kits	Prod. No.	Product Code
Prisma 3 complete, 2 3/8" API pin	93501498	9703-03-75-00

Wear Limits		
Casing	Min OD	71 mm
Piston / Cylinder clearance	Max.	0.23 mm
Piston / Bearing clearance	Max.	0.23 mm
Piston / Valve Housing Stem Clearance	Max.	0.3 mm

Lubrication Requirements
Use Atlas Copco Rock drill oil
Consumption - 0.1 l/hour per 100 Scfm of air consumed